

CONSTRUCTION EQUIPMENT – NICE

'08 – Caterpillar D6K Dozer, Cab & Air, 6-way 9' blade, 22" tracks, rear 3-shank ripper, Only Showing 2,786 hours, S/N AFBH00896



'17 – Caterpillar 326 F Track Hoe, Cab & Air, 31" tracks, Only Showing 2,705 hours, S/N PWGL10131

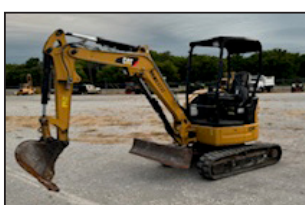
'06 – Caterpillar 315 CL Track Hoe, Cab & Air, Only Showing 2,367 hours, S/N 315CLCJC03706

'16 – Caterpillar DP30N Diesel Forklift, Only Showing 1,398 hours, S/N AT14G00073



'12 – John Deere 333D Skid Steer Loader, Cab & Air, rubber tracks, Only Showing 871 hours
Caterpillar 262 Skid Steer Loader, Cab & Air, Only Showing 1,672 hours

Takeuchi TL 10V-2 Skid Steer Loader, Cab & Air, rubber tracks, Only Showing 2,128 hours, S/N 410003520



JCB Midi 4wd Loader/Backhoe, Only Showing 443 hours, S/N 31239396

Caterpillar 303 E Mini Excavator, rubber tracks, S/N HHHM03237



Case 586E All Terrain Forklift, 6,000 lb, S/N 17020243

ICON Series 18D Pull Scraper, 18 yard

Garfield 1150 Carry-All Ejection Pull Scraper, 12 yard

Garfield 1400RS, 14' Pull Hydraulic Grader Blade



Rhino 3pt, All Hydraulic Blade

2 – Mec 2033 ES Electric Scissor Lifts

HAY EQUIPMENT

'16 – Massey Ferguson-Hesston WR 9870 Windrower, Cab & Air, Self-propelled, 23.1-R26 diamond tread drive tires, 16.5L-16.15 steering tires, S/N AGCM98700GHS13363 with WR 9150 razor-bar 13' head, S/N 91950GHRH4250, Only Showing 1,102 hours

Massey Ferguson 2946A Round Baler, 4 x 6 bales, flotation tires, auto cycle, net-wrap attachment, Only Showing 1,116 bales, S/N HHR12102



Massey Ferguson 2956A Round Baler, 5 x 6 bales, flotation tires, auto cycle, net-wrap attachment, Showing 8,646 bales, S/N GHR13231

Vermeer R2300 Hydraulic Twin Rake

John Deere 700 Hydraulic Twin Rake

Krone Big Pack 1270 Large Square Baler, multi bale

Hoelscher Square Bale Accumulator

SPRAYER and NURSE TANKS

Wylie W1501RF, 1600 Gallon, Pull-Type Sprayer with 60' hydraulic spray boom, cluster nozzles, 24.5-32 diamond tread tires, 100 gallon induction tank, 12 gallon wash tank and monitor, S/N 43936



Wylie 1000 Gallon Pull-Type Nurse Tank with pump

2 – Wylie double cone bottom, dual tanks, 6,000 gallon on ground level laydown trailers with engine and pumps

AUCTION

Saturday, September 28, 2024 ****10:00 AM****

6242 1836, Kaufman, TX 75142

Selling barn kept, low hour Tractors, Equipment and

Construction Equipment from C & C Land and Cattle Co. and Others

Directions: From Hwy. 34 and FM 1836 (East side of Kaufman, TX),
take FM 1836 East for 3.4 miles to Auction Site.

Auctioneers Note: The property belonging to C & C Land and Cattle Co. has recently sold. This auction will offer for sale one of the nicest sets of tractors, equipment and construction equipment we've had the opportunity to sell. There will be very few small items, so please be on time. This auction will be live onsite and online. Online bidding will be powered by Equipment Facts. Pre-bids will begin on September 25, 2024. Please review all terms and conditions and all associated fees before bidding online.

TRACTORS & LOADERS

'22 – Case IH 150 Maxxum, MFWD, Cab & Air, 16 speed Powershift transmission with left hand reverser, Michelin 16.9-R28 front tires, 20.8-R38 rear tires, 4 remotes, bar axles, wheel weights, electric mirrors with Case IH L-105 Loader, Only Showing 28 hours, S/N PNDH00858, Base Warranty through 12-21-2024, Emissions Warranty through 12-21-2027 or 3,000 hours



'13 – Case IH 210 Magnum, MFWD, Cab & Air, Powershift transmission, 18.4-R46 duals, 380/85-R34 front tires, front weights, 5 remotes, leather interior, AFS, Only Showing 1,795 hours, S/N ZCRH06264

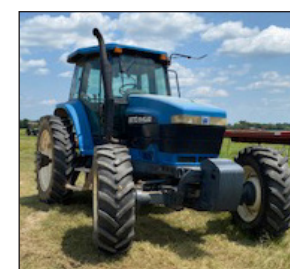


'12 – Case IH 210 Magnum, MFWD, Cab & Air, Powershift transmission, 18.4-R46 duals, 380/85-R34 front tires, front weights, 4 remotes, AFS, Only Showing 2,157 hours, S/N ZBRH04641

'09 – Case IH 125 Maxxum, MFWD, Cab & Air, 16 speed transmission with left hand reverser, 2 remotes, New 18.4-38 rear tires, 14.9-28 front tires, wheel weights with Case IH 750 Loader, Nice, Showing 4,997 hours, S/N Z8BE16542

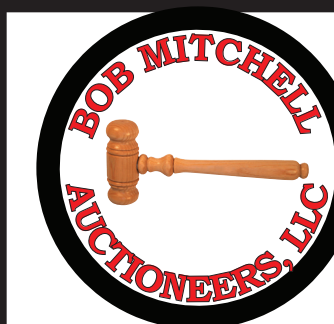


'09 – John Deere 5085M Rops Canopy, Sync Shuttle Plus transmission, 3 remotes, 420/90-R30 rear tires, 11L-15 front tires, Showing 3,459 hours, S/N MX130044



'06 – John Deere 8330, MFWD, Cab & Air, 16 speed Powershift transmission, 520/85-42 rear duals, 420/90-30 front tires, front weights, wheel weights, quick hitch, 3 remotes, Showing 8,128 hours, S/N RW8330P001203

'95 – Ford New Holland 8670, MFWD, Cab & Air, Powershift with Creeper transmission, 420/80-R46 rear duals, 380/85-R30 front tires, 4 remotes, Showing 9,184 hours, S/N D405707



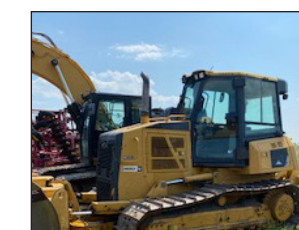
P.O. Box 873
Terrell, Texas 75160

AUCTION

Saturday, Sept 28, 2024

****10:00 AM****

C & C Land and Cattle Co. and Others
Kaufman, Texas



SALES TAX EXEMPTIONS

BUYERS claiming Sales Tax Exemption for Agricultural purposes are required to have a current AG Exemption Number.

BUYERS claiming Sales Tax Exemption must present Ag Exemption Number in the Buyer's name at the time of purchase or Sales Tax will be applied.

TERMS and CONDITIONS

- All items will be offered "as is" without warranty or guarantee, expressed or implied, with all faults and defects.
- Everything must be settled for date of auction with cash or check with bank letter. No Drafts.
- The buyer assumes all responsibility of every item when the item is sold to him or her.
- Bob Mitchell Auctioneers, Inc. is not responsible for any liability resulting from accidents, fire or theft.
- If there is an item in which more than one buyer claims the last bid, the auctioneer has the right to open the bidding up between those buyers only.
- Most items in this auction will be sold "without reserve", however the owners have the right to bid last or no sell their items.
- This auction is held under Texas Department of Licensing and Regulation.
- Tax will be charged unless current Texas Agriculture or Timber Registration Card is presented.
- All announcements made at the auction supersede all printed material.

Presorted First Class
US Postage
PAID
Dallas TX
Permit No 3193

FIRST CLASS
PRINTED IN USA

RETURN SERVICE REQUESTED

Equipmentfacts™

Powered by TractorHouse.com, MachineryTrader.com, TruckPaper.com & MarketBook.com

ONLINE BIDDING Powered by

Equipment Facts will be available.

ONLINE BIDDERS MUST REGISTER

through www.bmaiauction.com PRIOR

TO AUCTION DATE. When registering,

please review all Terms and

Conditions, and all associated

fees for bidding online.

Equipmentfacts™

Powered by TractorHouse.com, MachineryTrader.com, TruckPaper.com & MarketBook.com

EQUIPMENT



Rhino FS 15 Hydraulic Folding 15' Shredder

John Deere 115, 9' Pull-Type Disk, black gang

Sunflower 9421 Hydraulic Folding 30' Grain Drill, 7.5" spacings, double disc, press wheels, S/N OEZ90001K

Sunflower 1435, 23' Hydraulic Folding Disk, 9" spacings

Sunflower 5035, 30' Hydraulic Folding Field Cultivator, 5-spike bar harrow attachment

Krause Pull-Type 30' Hydraulic Folding Packer

H and S GM 170 Grinder Mixer, hay table, long hydraulic folding unloading auger, Digi-Star EZ 2000 scales – Clean, S/N 800096

Great Plains 2S-2600, 26' Hydraulic Folding Grain Drill, 7.5" double disc spacings and press wheels with liquid fertilizer attachment, row markers

Landol 9650, 50' Hydraulic Double Folding Field Cultivator with 5-bar spike harrow attachment, gauge wheels, walking tandems

Buffalo 6300, 12-row, 30" Hydraulic Stack-Bar Cultivator with two HD disc hillers, coulters, crop dirt shields, fertilizer knife, rear 700 gallon fertilizer attachment

Sunflower 1444, 40' Hydraulic Folding Disk

Great Plains 8F, 3-section Hydraulic Folding 30' Grain Drill, 7.5" spacings, double disc press wheels, row markers

Case IH 4800, 30' Vibra Shank Hydraulic Folding Field Cultivator, 3-bar harrow

Adams 16-row Fertilizer Rig, 1000 gallon tank



VEHICLES and ATVs



2 – 2014 Chevrolet 3500 HD pickup, 4x4, Z-71 package, Duramax 6.6 diesel engine, Allison automatic transmission, one Showing Only 29,179 miles and the second Showing Only 32,618 miles

2017 Jeep Grand Cherokee SUV, 4x4, Summit package, Hemi-V8 engine, automatic transmission, Showing 103,036 miles

2011 Mercedes GL350 SUV, all-wheel drive, Bluetec diesel engine, automatic transmission, Showing 132,725 miles

2008 Cadillac DTS car, V-8 engine, automatic transmission with approximately 60-70K miles (actual miles unavailable at time of print)

Kubota RTVX 900, 4wd Utility Vehicle, Showing 177 miles

2 – C-Force 500 Moto, 4wd 4 Wheelers, one Showing 26 hours the second Showing 48 hours

Polaris Sportsman 570 4 Wheeler, 4wd

TRUCKS and SEMI-TRAILERS

'02 Mack CH 613 Day Cab Truck, Mack 460 HP engine, Fuller 13-speed transmission

2000 Freightliner Classic Day Cab Truck, Detroit Series

60 engine, 10-speed transmission, ID: 1FUPFSZB1YPF00373, Only Showing 440,297 miles (actual)

1998 IHC9100 Day Cab Truck, C-12 Cat engine, 10-speed transmission, Showing 472,712 miles

2004 AZTEC Expedition 102 x 53' Drop Deck Trailer, 10' upper deck, 5' dovetail with fold-over, flat ramps, air-ride, S/N 1A9VB4B344M362246

2006 TrailEze 7E 70HT, 70 ton, 48', 10' upper deck, 8' hydraulic dovetail, winch, flip-out sides, load scales, S/N 1DA72C76X6C018288

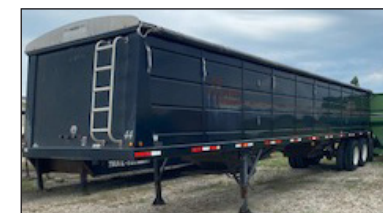
2009 Maurer Hopper Bottom Steel Grain Trailer, 42' roll-over tarp, spring-ride, S/N 1M9KG42269S152213

1999 CPS Hopper Bottom Steel Grain Trailer, 42' spring-ride

2004 Freightliner M2, 4 Door Truck, C7 Cat engine, 9-speed transmission, Western hauler bed

1992 BarBel 7000 Gallon Tanker Trailer, 3" pump, inductor with 2-tote carrier (No Title)

2001 Ranco Round Bottom, 35' Trailer



TRAILERS

2 – Donahue Gooseneck 7' x 24' Livestock All Metal Trailers, 6'8" tall, tandem axle, covered nose, 2 center gates

Big Tex 12 LX, 7'x 12', Dump Trailer, 12,000 lb GVW, 31" sides

Excel Gooseneck 4-horse Slant Trailer with Tack Room

2019 Cherokee Bumper-Pull 30' Trailer with slide-out electric awning, kitchen in front, queen size bed

Shop-Built Gooseneck, 28' tandem axle Low-Boy Trailer with dovetail, slide-in ramps (appears to be new-unused)

Shop-Built, Bumper-Pull 7'x20' Trailer, tandem axle, pipe-rail

2015 Lamar Bumper-Pull, 300 gallon Fuel Trailer, tandem axle, electric pump, Good



LIVESTOCK EQUIPMENT

2 – Molly MFG, Silencer Hydraulic Squeeze Chute with scales, Good

Wilson Portable Large Corral, 125 head capacity W.W. Round Pen approximately 60x 60 with two overhead gates

There will be concrete troughs, liquid feeders, etc.

(quantity unknown at time of printing)

3,000 Gallon Fuel Tank on skid with pumps



GRAIN HANDLING EQUIPMENT

Unverferth 325, 4-wheel wagon with grain box extension, roll-over tarp, hydraulic drill-fill auger

Westfield WR80-50, 8" Portable Auger, P.T.O., belly dump attachment

Westfield WR-8026 Portable Auger, electric motor

SPRIG PLANTER and HARVESTER – Very Clean

Bermuda King 20, 6-row Grass Planter, S/N 3930

Bermuda King 42" /RL Grass Harvester, S/N 7131



Conducted By:
Bob Mitchell Auctioneers, LLC
 P.O. Box 873, Terrell, TX 75160
Kyle Mitchell,
 Auctioneer – TX Lic# 8472
 Cell: 214-908-0894

Website: www.bobmitchellauctioneersllc.com