

SPRAYER – FERTILIZER EQUIPMENT

2021 John Deere R4044, Self-Propelled Sprayer with stainless steel 1,200-gallon tank, 120' boom, 380/90-R46 tires, Starfire 6000, auto-track, hi-flow pump with dual flow meters, auto-solution control, showing 901 hours, S/N 1N04044RTL0215272

1 Set of 650/65-R38 floaters

(2) Bumper-pull, 1,000-gallon nurse tank trailers, tandem axle with Honda motors and pumps

Blumhardt Trail Master, pull-type sprayer with 60' boom, hydraulic-driven, adjustable axle

(4) 3,000-gallon fertilizer tanks, electric motor driven

6,000-gallon, pop-up fertilizer tank and trailer

16-row liquid fertilizer applicator, hydraulic pump, Raven monitor with 1,000-gallon, pull-type trailer

Adams FL24, portable, 38' belt conveyor with Honda 630 engine, hydraulic tank and pump

Continental Ag Meier, pull-type, 500-gallon sprayer with 27' boom, P.T.O. driven



COMBINES – HEADERS - WINDROWER

John Deere 9870 STS Bullet Rotor, 4-wheel drive, 4G modem, 5-speed driven feeder house, 250/50-R32 drive tires, 28L-26 steering tires, showing 2,276 separator hours, 3,263 engine hours, S/N 1H09870SAA0736483

John Deere 9770 STS Bullet Rotor, 4-wheel drive, 4G modem, 520/85-R42 dual drive tires, 28L-26 steering tires, showing 2,101 separator hours, 2,850 engine hours, S/N 1H09770SCA0740316

John Deere 9610 Maximizer Combine, 4-wheel drive, Mauer grain tank extensions, 520/85-R38 dual drive tires, 18.4-26 steering tires, showing approx. 2,000 separator hours, S/N H09610X679301

John Deere 645 Flex Draper, 45' header with Crary golden-cut system, AWS air reel, S/N 1H0645FDLF0775093

America 842R header trailer

John Deere 635 flex, 35' header

John Deere 930 header

John Deere 612, 12-row corn header

Frontier HT 1238 header trailer

John Deere 853A, 8-row, row crop header

Patriot corn head trailer

J&M 1051 grain cart, roll-over tarp, P.T.O. driven

A&L 705 grain cart, P.T.O. driven

UFT 400-bushel grain cart

(4) Pax 700-bushel, cone-bottom grain tanks



AUCTION

Saturday, APRIL 12, 2025 **10:00 AM**

Strawn Valley

322 East Street, Nevada, Texas 75173 (36 miles east of Dallas, TX)

Directions: From Highway 6 and East Street in Nevada, TX, go South on East St. to Auction Site.

Selling barn kept, low hour TRACTORS, COMBINES, SP WINDROWER, SP SPRAYER, EQUIPMENT, TRUCK, TRAILERS AND MUCH MORE.

Auctioneers Note: Strawn Valley has discontinued their farming operation and has commissioned Bob Mitchell Auctioneers, LLC., Terrell, TX to offer for sale, at public auction, all their tractors and machinery. Not one to miss, this auction will be live and online with both Equipment Facts and Proxibid. Please review all Online Terms and Conditions prior to bidding. No Buyer's Premium for Live bidding and purchase. Online Bidding will have a 4% Buyer's Premium with a \$2,000.00 cap per item. All purchasers at the Live Auction will be required to pay their individual invoice prior to loading and removing items from the Auction Site.

*Loader will be available until April 24, 2025. No Dock at Auction Site.

Trailers will need ramps or detach for rolling stock.

TRACTORS and LOADERS

John Deere 4105 Utility, MFWD, hydrostat transmission, R4 tires with JD H165 Loader, showing 274 hours, S/N 1LV4105HHFH810561

2018 John Deere 5055, Cab & Air, MFWD, 12 x 12 with power-reverser transmission, hydraulic remote, 16.9-28 rear tires, 9.5-24 front tires with JD 520M Loader, showing 221 hours, S/N 1PY5055EPJJ402819

2013 John Deere 6125M, Deluxe Cab & Air, MFWD, 16-speed power-quad transmission with left hand hydraulic shuttle, 3 hydraulic remotes, 460/85-R34 rear tires, 380/85-R24 front tires with JD H340 Loader with joy stick controls, showing 1,561 hours, S/N 1L06125MEDH751601

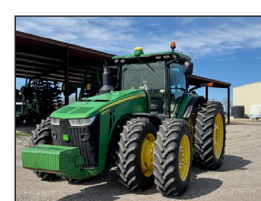
2014 John Deere 8370R, Premium Cab & Air, MFWD, IVT transmission, ILS front axle, 6 hydraulic remotes, quick hitch, front fenders, 480/80-R50 rear duals, 420/85-R34 front duals, front and rear weight pkg., showing 3,549 hours, S/N 1RW8370RTED091971

2014 John Deere 8370R, Premium Cab & Air, MFWD, IVT transmission, ILS front axle, 6 hydraulic remotes, quick hitch, front fenders, 480/80-R50 rear duals, 420/85-R34 front duals, front and rear weight pkg., showing 3,639 hours, S/N 1RW8370RAED095303

2014 John Deere 8370R, Premium Cab & Air, MFWD, IVT transmission, ILS front axle, 5 hydraulic remotes, quick hitch, front fenders, 480/80-R50 rear duals, 380/85-R38 front duals, front and rear weight pkg., showing 3,957 hours, S/N 1R8370RCED096988

John Deere 8400 Deluxe Cab & Air, MFWD, power-shift transmission, 4 hydraulic remotes, quick hitch, 480/80-R46 rear duals, 420/85-R30 front tires, front and rear weight pkg., showing 11,044 hours, S/N RW8400P021922

(2) John Deere Starfire 3000 domes and 2630 display screens.



P.O. Box 873
Terrell, TX 75160

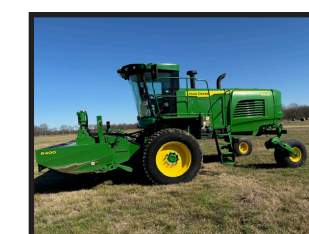
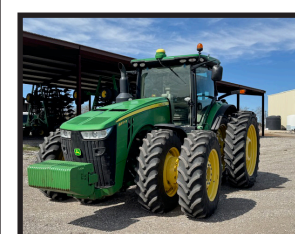
AUCTION

Saturday, APRIL 12, 2025

****10:00 AM****

Strawn Valley

322 East Street, Nevada, Texas 75173



SALES TAX EXEMPTIONS

Buyers claiming Sales Tax exemption for agricultural purposes or resale are required to have either a current Texas Ag/Timber Number, or a Texas Resale Number at the time of purchase or sales tax will be applied.

To apply for an Ag/Timber Number please go to the following website:
<https://comptroller.texas.gov/taxes/ag-timber>

TERMS and CONDITIONS

- All items will be offered "as is" without warranty or guarantee, expressed or implied, with all faults and defects.
- Everything must be settled for date of auction with cash or check with bank letter. No Drafts.
- The buyer assumes all responsibility of every item when the item is sold to him or her.
- Bob Mitchell Auctioneers, Inc. is not responsible for any liability resulting from accidents, fire or theft.
- If there is an item in which more than one buyer claims the last bid, the auctioneer has the right to open the bidding up between those buyers only.
- Most items in this auction will be sold "without reserve", however the owners have the right to bid last or no sell their items.
- This auction is held under Texas Department of Licensing and Regulation.
- Tax will be charged unless current Texas Ag/Timber number or Texas Resale number is presented.
- All announcements made at the auction supersede all printed material.

Presorted First Class
US Postage
PAID
Dallas TX
Permit No 3193

FIRST CLASS
PRINTED IN USA

RETURN SERVICE REQUESTED

Online Bidding
Powered by:
proxibid

Equipmentfacts[™]

Powered by TractorHouse.com, MachineryTrader.com, TruckPaper.com & MarketBook.com

HAY CUTTERS, BALERS, RAKES

2022 John Deere W200M Windrower, self-propelled with JD R400, 13' rotary head, steel on steel conditioners, only showing 649 machine hours, 441 head hours, S/N 1EDW200MTNN481029

Kuhn 4050 TL pull-type, 13' GMD rotary disc cutter

John Deere 468 round baler with net-wrap

New Holland BR7070 round baler with net-wrap

John Deere 700 hydraulic twin rake

Kuhn SR112 12-wheel rake

DeWeze 482 haybed (off Dodge)



PETERBILT TRUCK and TRAILERS

2004 Peterbilt 379 Truck with Cat C15 engine, 15-speed transmission, 60" flat-top walk-in sleeper, 286" wheel base, ID# 1XP-5DB9X-7-4D818344

2019 Road Runner 4000 sprayer trailer, 3-axle, air-ride with 4,000-gallon tank, Honda 390 engine, 300 GPM hi-flow pump, S/N 1R9SD5135KL427092

2007 Viking drop-deck, 102x48 trailer, air-ride, tandem axle, GVWR 86000, 35-ton, spring-folding ramps, dove-tail, S/N 1V9CR482X7N062115

Drop-deck, 8'x50' trailer, tandem axle, 5' dove-tail, fold-over ramps

Xcel gooseneck trailer, 32', tandem axle

2014 Timpte Super Hopper grain trailer, 42', aluminum, air-ride, 66" sides, tandem axle, 11R-24.5 tires, roll-over tarp, aluminum wheels

2003 Timpte Super Hopper grain trailer, 42', aluminum, air-ride, 66" sides, tandem axle, 11R-24.5 tires, roll-over tarp, aluminum wheels

HayKing GN, 5-bale tandem axle trailer

Bumper-pull, 16' livestock trailer

Bumper-pull, 16' flat-bed trailer



GRASS PLANTER and SEED TENDERS

Bermuda King 6-row, 20' grass planter (Like New)

Great Plains NTS 2611 no-till seeder, 11', pull-type with all 3 boxes, seed box, small seed box, native grass box (Like New)

Unverferth 3750 XL seed runner tender with 2410 computer scales, 3-axes, Honda 390 engine, inoculate box, bumper-pull

Meridian 220 bulk seed tender, tandem axle, bumper-pull with Honda 160 engine



CONSTRUCTION EQUIPMENT

2020 John Deere 333G Skid Steer Track Loader, Cab & Air, high-flow hydraulics, 2-speed, 18" tracks, rear camera, showing 406 hours, S/N 1T0333GMLKF363001 (Like New)

2018 YanMar V1017-A Mini Excavator, diesel, back-fill blade, 2-speed, external hydraulics, showing 1,930 hours, S/N YMRV107CJYJAF509

John Deere 240D LC Excavator with Doggett 52" bucket, thumb, showing 6,528 hours, S/N FF240DX605935

John Deere 310SK, 4WD Extendahoe, Loader Backhoe, quick attach bucket and forks, showing 3,294 hours, S/N 1T0310SKAFE276039

Reynolds 5C, 5-yard dirt scraper, S/N 25044

Reynolds 10C, 1-yard dirt scraper, S/N 21937

Cat D7 dozer with 13' straight blade, a Rome hydraulic 3-shank ripper and Fleco brush rake, S/N 47A1631

John Deere Killefer, 10' pull-type box-blade

Industrias America 160R pull-type, hydraulic 16' blade

Hyundai 25-L forklift, S/N HF0210245, 4,220 lb, propane



TILLAGE EQUIPMENT, DRILLS, PLANTER

(3) Landoll 6230, 29' disks, walking tandems, wing gauge wheels

(2) John Deere 1890 Pro Series, no-till, air-drills, 36', 7.5" spacings, cast serrated closers, S/N 1A81890CKKH785111 and S/N 1A81890CHKH785117

(2) John Deere 1910 tow-behind air carts, dual tank, (8) primary fan cart packs, black, blue, yellow and green meters, seed boot stabilizers, Bonilla seed tabs, Aricks T-handles and cover-plates, Red-E lower intelligent ag blockage monitoring with tablets, S/N 1A81910HHKF785107 and S/N 1A81910HAKF785105

John Deere 455, 30' grain drill, 7.5" spacings, 2x13 press wheels

Kelly Diamond harrow 45, 45' hydraulic folding

Great Plains 6851HD, pull-type, 16-bar harrow

John Deere 610 chisel plow, 27 shank, flat-fold with harrow

John Deere 835 field cultivator, 40', hydraulic folding with harrow

Kinze 3600 planter, 16-row, 30", (4) 150-gallon fertilizer tanks, John Blue pump, row markers

John Deere 980 cultivator, 32' with harrow

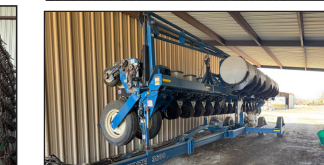
Sunflower 1434 disk, 33'

Land Pride Plainsman shredder, 15', hydraulic fold

Bush Hog 3208 shredder, 8', 3pt

AerWay AW80H Aerator, 8'

McFarland 45' harrow, pull-type



MISC. EQUIPMENT, JD GATOR, Z-MOWER, SHOP EQUIPMENT

Buhler Y362 Farm King grain cleaner

John Deere XUV, 825M Gator, full body-guard, windshield, only 238 hours, S/N 1M0825MBTMM041392

John Deere Z970R Zero-Turn Commercial Mower, 35 HP, 60" on demand mulch deck, showing 1,362 hours

LaMar 1,000-gallon fuel trailer, pull-type, tandem axle with pump

1,000-gallon fuel tank on skids with pump

Dayton electric, dual head shop air compressor, SA 310A floor-mount tire changer, hydraulic press, hardware bin with hardware, metal shop table with vice, bulk oil dispenser, hydraulic floor jack, jack stands and more shop related items, parts and filters for most equipment and more.



AUCTION CONDUCTED BY:
Bob Mitchell Auctioneers, Inc.
P.O. Box 873, Terrell, TX 75160
Kyle Mitchell
Lic #8472
Cell: 214-908-0894
www.bobmitchellauctioneersllc.com