



P.O. Box 897  
Terrell, Texas 75160

# AUCTION

**SATURDAY, March 23, 2024**

**\*\*10:00 AM\*\***

**Harry “Hank” Smith Jr. Estate Terrell TX**



**SALES TAX EXEMPTIONS**

**BUYERS claiming Sales Tax Exemption for Agricultural purposes are required to have a current AG Exemption Number.**

**BUYERS claiming Sales Tax Exemption must present Ag Exemption Number in the Buyer’s name at the time of purchase or Sales Tax will be applied.**

**TERMS and CONDITIONS**

1. All items will be offered “as is” without warranty or guarantee, expressed or implied, with all faults and defects.
2. Everything must be settled for date of auction with cash or check with bank letter. No Drafts.
3. The buyer assumes all responsibility of every item when the item is sold to him or her.
4. Bob Mitchell Auctioneers, Inc. is not responsible for any liability resulting from accidents, fire or theft.
5. If there is an item in which more than one buyer claims the last bid, the auctioneer has the right to open the bidding up between those buyers only.
6. Most items in this auction will be sold “without reserve”, however the owners have the right to bid last or no sell their items.
7. This auction is held under Texas Department of Licensing and Regulation.
8. Tax will be charged unless current Texas Agriculture or Timber Registration Card is presented.
9. All announcements made at the auction supersede all printed material.

RETURN SERVICE REQUESTED

**FIRST CLASS**  
PRINTED IN USA

Presorted First Class  
US Postage  
**PAID**  
Dallas TX  
Permit No 3193

**Bob Mitchell Auctioneers,LLC.**  
**P.O. Box 873, Terrell, TX 75160**  
**Kyle Mitchell: License #8472**  
**Kyle Cell Ph: 214-908-0894**  
**www.bobmitchellauctioneersllc.com**



# AUCTION

**SATURDAY, March 23, 2024 \*\*10:00 AM\*\***

**Harry “Hank” Smith Jr. Estate**  
**13696 CR 352, Terrell, TX 75160**  
**(Elmo Community)**

**Directions:** Elmo is located 6 miles East of Terrell, TX on Highway 80. From Highway 80 and CR 352, go North on CR 352 for 2.3 miles to the Smith Ranch and Auction Site.

**Auctioneers Note:** Due to the passing or Mr. Harry “Hank” Smith, the estate has commissioned Bob Mitchell Auctioneers, LLC of Terrell, TX to offer for sale at public auction, his dozers, tractors, pickups, equipment, trucks, trailers, and miscellaneous items. Everything sells, from fence to fence, from wagon wheels to dozers.

**\*\* LIVE AUCTION ONLY – NO INTERNET BIDDING FOR THIS AUCTION \*\***  
**Also selling in this auction will be the Green, Roberts and Norris Estates.**  
**We will allow neighbors to sell their tractors and equipment in this auction, but only absolute items that do not compete directly with items from the Estates.**  
**Call Kyle Mitchell at 214-908-0894 for pre-approval.**

## TRACTORS and LOADERS

John Deere 5065E Cab & Air Tractor, MFWD, standard shift transmission with left hand power-reverser, hydraulic remote, 16.9-28 rear tires, 9.5-24 front tires with John Deere 520M loader, showing only 804 hours, S/N DY145033

John Deere 6115D Cab & Air Tractor, standard shift transmission with left hand power-reverser, dual hydraulic remotes, 18.4-38 rear tires, 10.00-16 front tires with John Deere 563 loader, showing only 2,633 hours, S/N 6115D001204

Case IH MX110 Cab & Air Tractor, MFWD, powershift transmission with left hand, hydraulic shuttle, triple hydraulic remotes, 420/85-R28 front tires, 520/85-R38 rear tires with Great Bend 760 loader, showing only 1,306 hours, S/N JJA0117755

John Deere 5065E Tractor with 16.9-28 rear tires, 7.50-16 front tires, hydraulic remote, John Deere 512 Loader, Showing 1,144 hours, S/N 5065EPEB015841

Case IH 5230 Cab & Air Tractor, standard shift transmission with left hand hydraulic shuttle, dual hydraulic remotes, 18.4-38 rear tires, 11.00-16 front tires with Great Bend loader, showing 5,000 hours, S/N JJF1057271

John Deere 3020 Diesel Tractor, roll bar canopy, dual hydraulic remotes, 18.4-38 rear tires, 11L-15 front tires, S/N 157260R (rear console, late model)

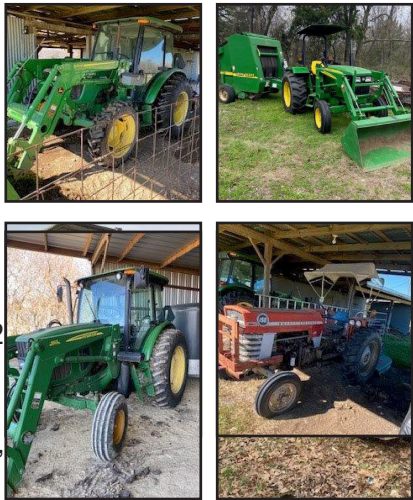
Massey Ferguson 150 Diesel Utility Tractor, 13.6-28 rear tires, 6.00-15 front tires,S/N 9A107069, clean

John Deere 1020 Diesel Utility Tractor, hydraulic remote, 13.6-28 rear tires, 6.00-16 front tires

John Deere 148 loader with brackets (thought to fit JD 3020)

John Deere 512 Loader with brackets

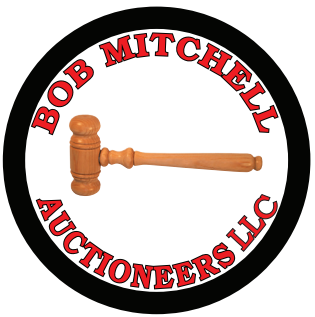
Frontier Quick Attach pallet forks, bale forks





# A U C T I O N

**SATURDAY, March 23, 2024 \*\*10:00 AM\*\***  
**Harry "Hank" Smith Jr. Estate | 13696 CR 352, Terrell, TX 75160 (Elmo Community)**



## CONSTRUCTION EQUIPMENT

John Deere 700H LT, Caged, Cab & Air Dozer, powershift transmission, 10ft, 6-way hydraulic blade, sweeps, vail hydraulic rear 3-shank ripper, showing 6,177 hours, S/N 700HX005635  
John Deere 550G Dozer with Rops, sweeps, 8'6", 6-way hydraulic blade, showing 4,815 hours, S/N 550G173815678  
John Deere 624G, Cab & Air Wheel Loader with Rockland LA 624 HL bucket, S/N DW624GD541796  
Soil Mover SM50, Pull-Type Dirt Cart with front dolly wheels  
2 – brush rake attachments  
Mesquite HD Grubber attachment for dozer  
New rear 3-shank hydraulic attachment for dozer  
New quick attach 6ft, hydraulic driven shredder



## SALVAGE CONSTRUCTION

\*All Salvage Items are located on ranch and will be sold by pictures.\*

Caterpillar D7F Dozer with sweeps, Rops, straight blade with hydraulic tilt, S/N 94N3980 (thought to be running when parked)  
IH Dozer with 7ft hydraulic blade, sweeps and Rops  
Kawasaki 80ZII Cab Wheel Loader  
International E211 Pay Scraper



## VEHICLES

2019 Ford F250 XLT Super Duty, Extended Cab, 4x4, automatic transmission with only 11,869 miles showing  
2017 Ford Expedition XLT, Texas Edition, leather interior, showing only 36,000 miles  
2012 Chevrolet 2500 HD, Texas Edition, Extended Cab, automatic transmission, showing 127,189 miles  
2001 Dodge Ram 3500 SLT Laramie, Extended Cab, Cummins Diesel engine, automatic transmission, dually, 300,000 miles  
1978 Chevrolet El Camino (not running)  
Pontiac Catalina 4 Door Car, VIN 252697R128857 (not running)



## EQUIPMENT

Hay King PDM 28-22-9, 11' Disk, Like New  
Hay Van, Pull-Type 13' No-Till Drill with small seed box and chain harrow, acre meter shows 1,122 acres  
John Deere MX10, Pull-Type Shredder  
Bowie 3-Row, 35" Grass Sprigger  
Bowie 53" Grass Digger  
John Deere 8300 Double Disk Grain Drill  
John Deere TWA, 11' Plowing Disk  
IHC 14' Tandem Disk  
Gill 3pt, 8' Box Blade  
3 – Danuser F8, 3pt Post Hole Diggers  
Ferguson 3pt, 7-Shank Cultivator  
Ferguson 3pt, 9-Shank Cultivator

Ford 917, 3pt Flail Mower  
3pt, 2-Bar, 7-Shank Chisel Plow  
Modern 3pt, 6' Box Blade with scarifier bar  
3pt, 6' Angle Blade  
John Deere Wing-Fold Shredder  
Bush Hog 160, 4-Row Shredder (Salvage)  
Frontier RC 2060, 3pt Shredder  
Ford Pull-Type 8' Shredder



## HAY EQUIPMENT

Kubota BV 4180 Round Baler with net wrap, showing 5,011 bales  
John Deere 467 Round Baler with net wrap  
John Deere 457 Round Baler, twine tie, showing 7,594 bales  
John Deere 830 Center-Pull MOCO with finger conditioner  
Kubota DM 2032, 3pt Disc Mower  
Krone 403, 3pt Disc Mower  
Agco-New Idea 5409, 3pt Disc Mower  
KMC 4755 Pull-Type Caddy Cart  
Frontier Pull-Type 10-Wheel Rake  
John Deere 700 Twin Hydraulic Rake (Salvage Parts Only)



## LIVESTOCK EQUIPMENT and LIVESTOCK TRAILERS

Hydraulic Squeeze Chute with palpation cage  
For-Most Calf Squeeze Chute/Table  
Squeeze Chute  
Approximately 15, 5'x10' Livestock Panels  
4'x20' Wire Panels  
C&S Bumper-Pull, 6'x16' Livestock Trailer, tandem axle, center gate, escape door, spare, NICE  
S&H Bumper-Pull 6'x16' Livestock Trailer with tandem axles  
Dugan Gooseneck 6'x20' Livestock Trailer, tandem axle, bow-top  
Hay Van Bumper-Pull, 4-Bale Hay Trailer  
3 – Saddles, cattle-guard, t-posts, wire, etc.



## TRUCK and TRAILERS

1971 Ford Truck with tandem axles, large winch, diesel engine  
1974 Hyster Trailer, 3 axle, lay down, 42', double-drop  
1963 Fruehauf 5th Wheel, 20' Dozer Trailer, tandem axle  
2015 Load Trail Bumper-Pull Trailer, 102"x24', tandem axle with slide in ramps, NICE  
Mongoose Gooseneck Trailer, 102"x24', tandem duals with 5' dovetail andmfold-over ramps  
2 – Shop-Built, Bumper-Pull 16' tandem axle trailers



## MISC. ITEMS

Drill Stem pipe various sizes and lengths (several stacks), LOTS of scrap iron, culverts 21' and 18', approximately 1,000-gallon fuel tank on skids with pump, Miller welder on trailer with Tecumseh engine, metal pallet racks, misc. shop items, diamond plate toolboxes, diamond plate L-shaped fuel tanks, Coats tire machine, parts washer, parts, jacks, antiques and MUCH, MUCH MORE.